



ECHO IDAHO:

Counseling Techniques for SUDs

Alternative Approaches to Housing Clients with SUDS

07/18/2024

Kendra Lutes, LCPC

Associate Behavioral Health Director, Terry Reilly Health Services

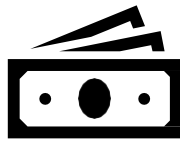
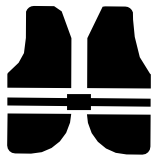
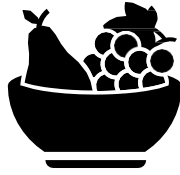
None of the planners or presenters for this educational activity have relevant financial relationship(s) to disclose with ineligible companies whose primary business is producing, marketing, selling, re-selling, or distributing healthcare products used by or on patients.

Learning Objectives

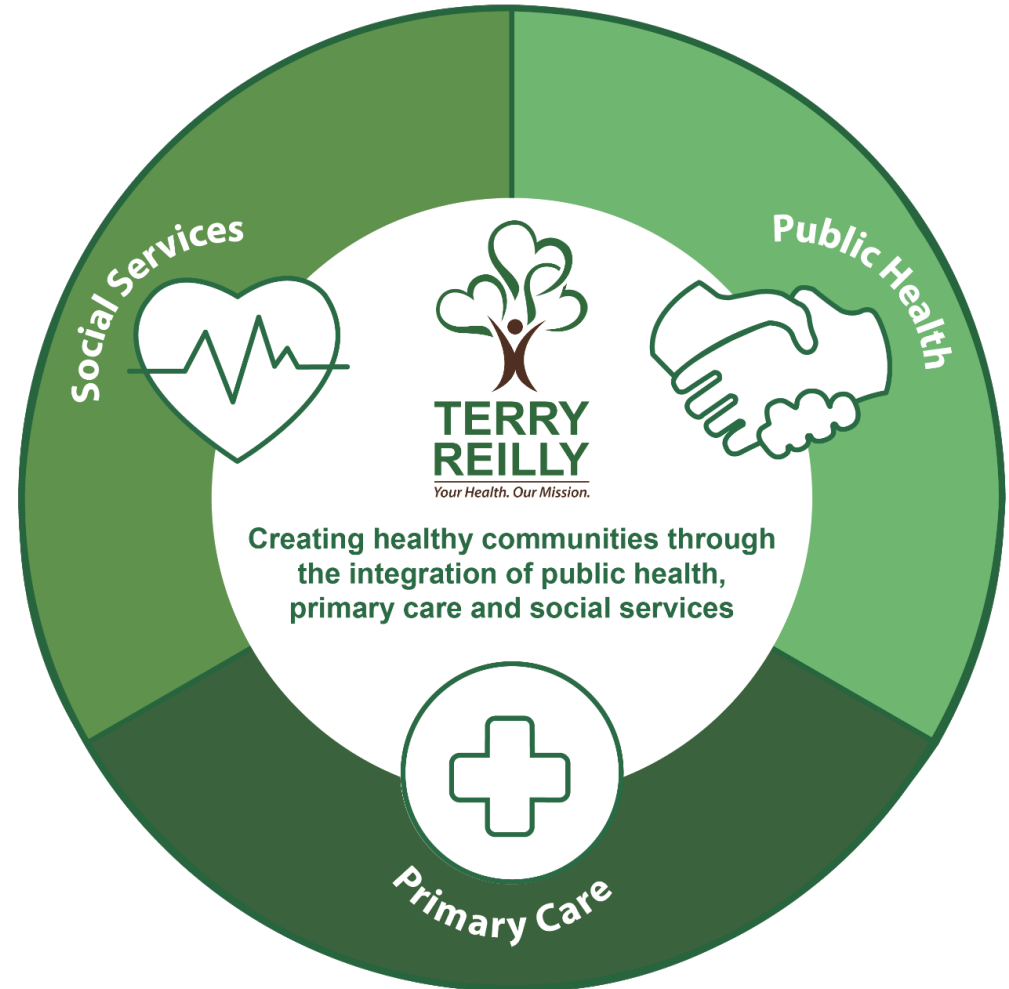
- Consider the application of Housing First in recovery housing
- Learn about recovery support services in Permanent Supportive Housing (PSH)
- Review the evidence for Permanent Supportive Housing



We care for vulnerable people in Southwest Idaho



Social Drivers of Health



Housing as a platform for Recovery



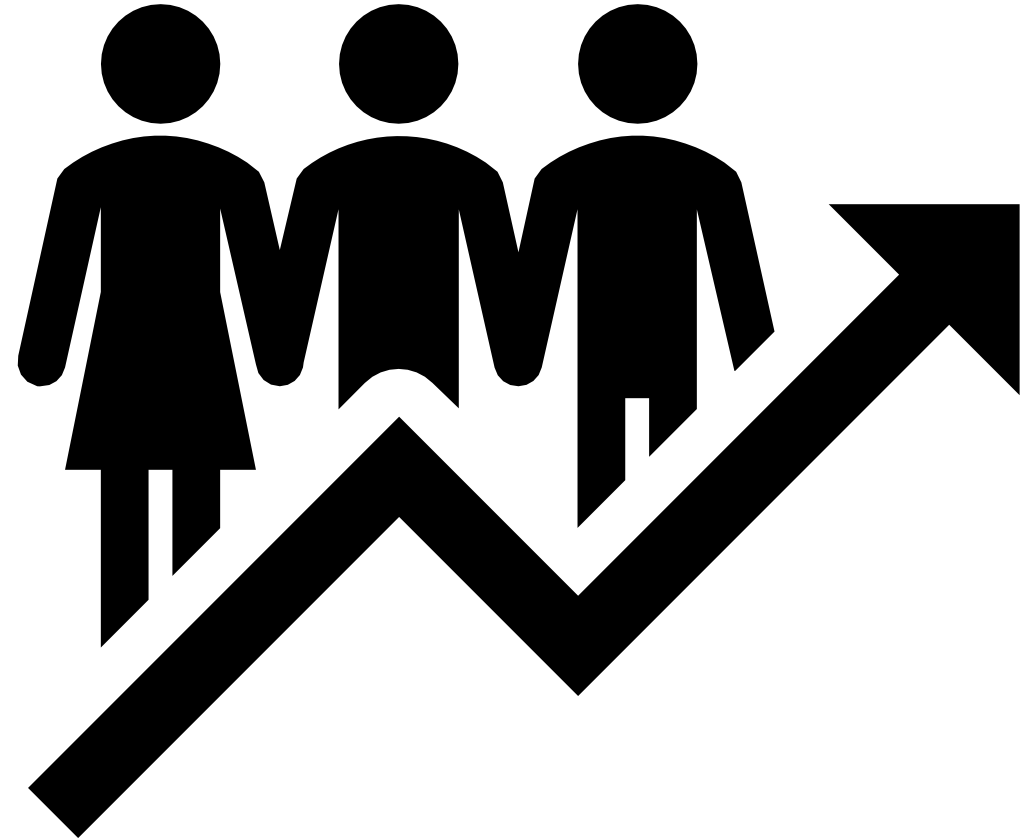
Housing First Programs



Reduce use of opioid use
Reduce alcohol use
Reduced use of costly
emergency services



Improved adherence to
Medication Assisted
Treatment
Improved housing stability





NEW PATH COMMUNITY HOUSING

Supportive Housing – Not Housing Only



Project Lead
Licensed Clinical Social Worker
Housing Specialist
Peer Support Life Skills Coach
Licensed Practical Nurse/Patient Educator
Case Manager/CADC
Three Residential Counselors
AmeriCorps Volunteer



Recovery-based services

- Harm Reduction
- Promote Social Inclusion & Community
- Trauma Informed
- Include Peer support
- Integrated with Primary Care
- Support Staff Wellness

New Path Program Objectives



Health

Reduction in utilization of emergency medical service treatment (e.g., paramedics, emergency department, etc.) and hospitalizations.



Criminal Justice

Decrease in criminal justice involvement.



Housing

Provision of stable housing and reduction in emergency shelter utilization.



Well-being

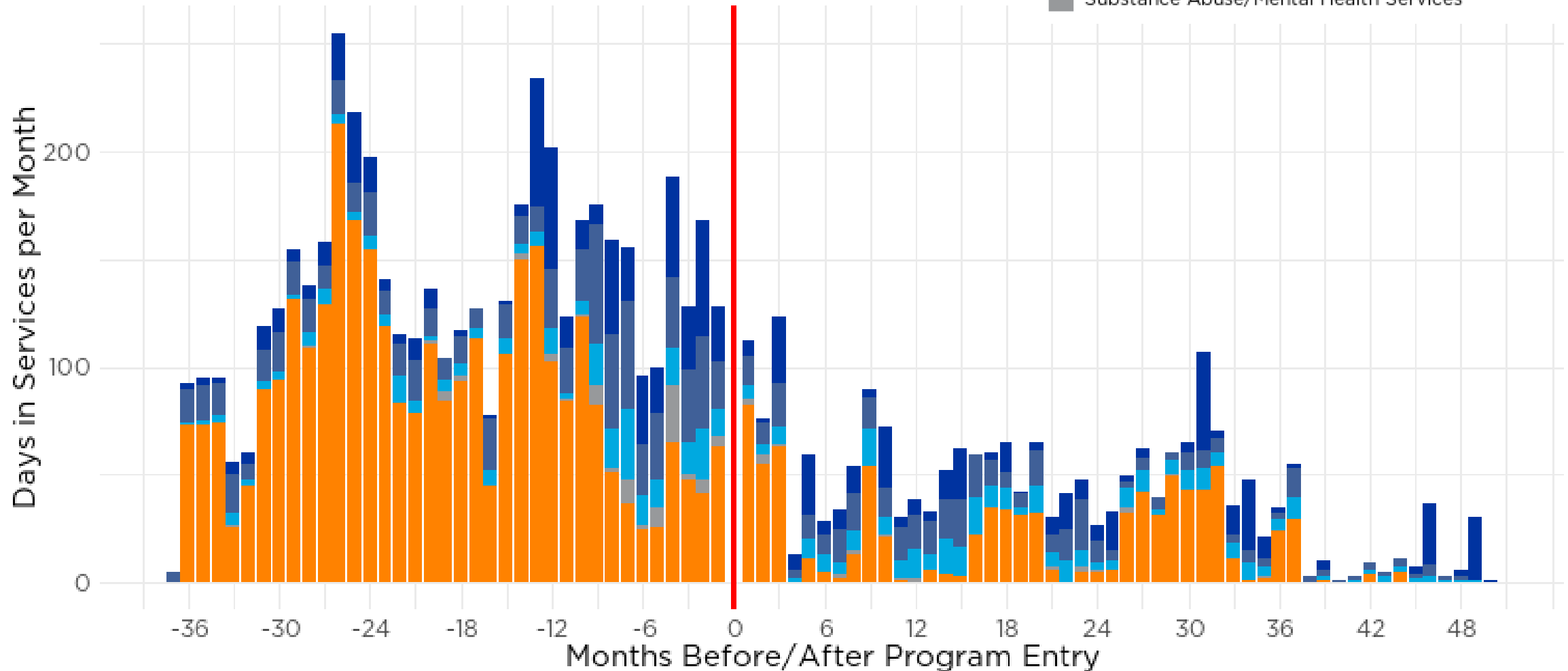
Increased and strengthened connections to and engagement with mainstream resources and peer support systems.

2022 Service Utilization

Service Type:

- Hospital Inpatient Stays
- Emergency Room Care
- Paramedic Services
- Substance Abuse/Mental Health Services
- Jail Stays & Arrests

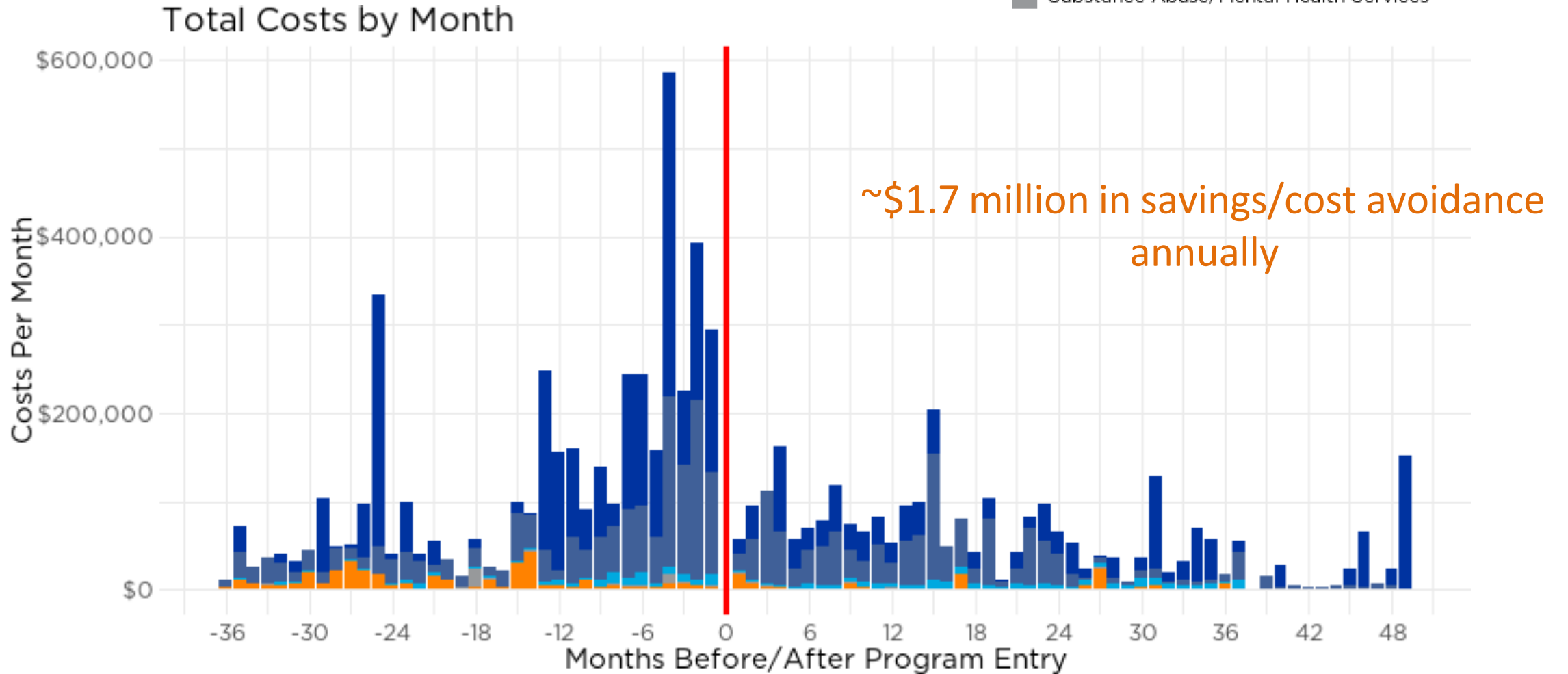
Total Days in Services by Month



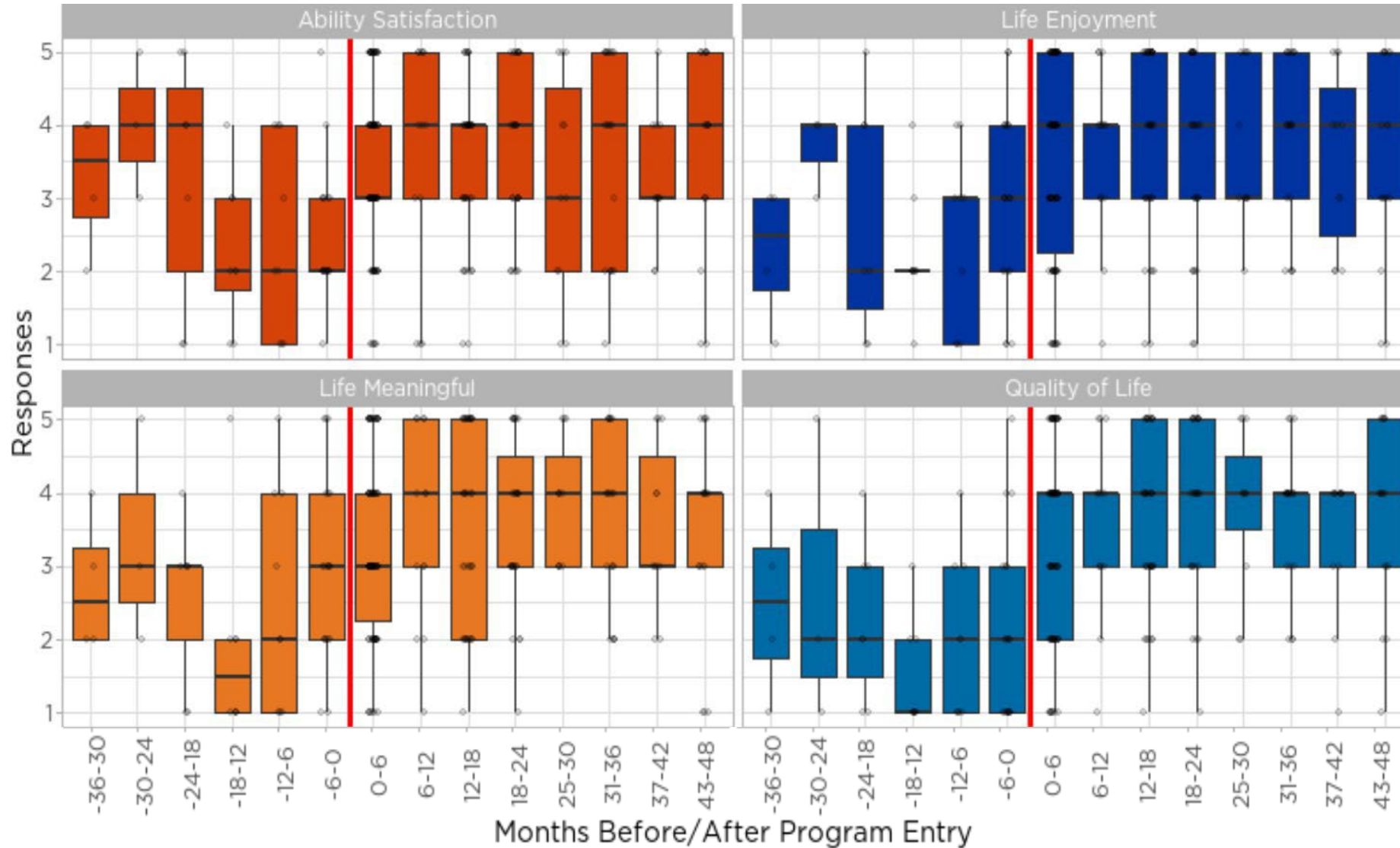
2022 Utilization Cost

Service Type:

- Hospital Inpatient Stays
- Emergency Room Care
- Paramedic Services
- Substance Abuse/Mental Health Services
- Jail Stays & Arrests

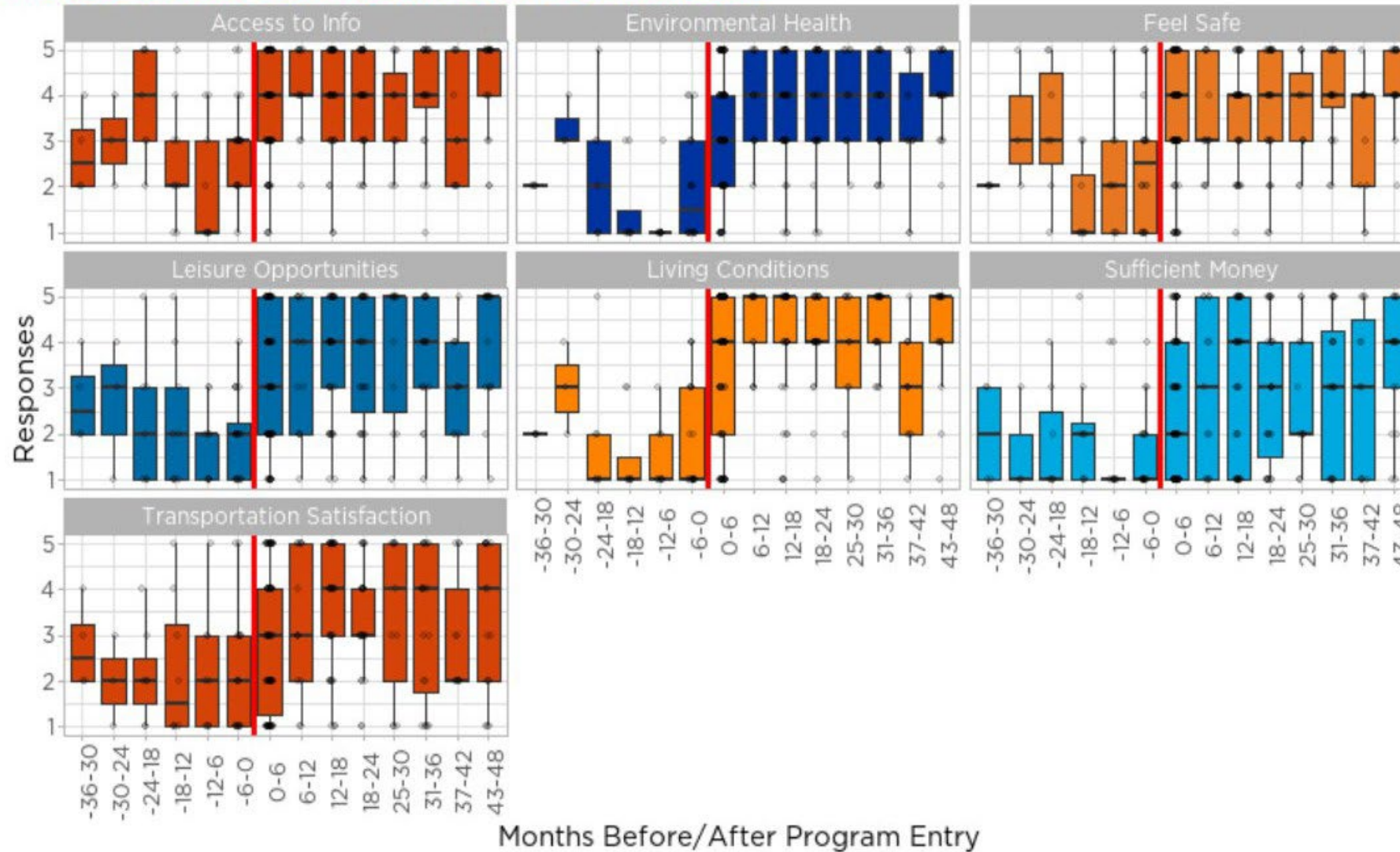


Quality of Life



Quality of Life

FIGURE 13: QOL ENVIRONMENTAL QUESTIONS



Housing as a platform for Recovery

Considerations:

- Recovery Language and Vision
- Wholistic/Integrated care
- Experts with Experience
- Housing choice
- Standards of care & housing quality
- Create community



References

- Addiction Recovery and Housing: A Report from the 2016 National CSH Summit
<https://endhomelessness.org/wp-content/uploads/2016/08/2016-national-slides-recovery-housing.pdf>
https://www.housingis.org/sites/default/files/Addiction_Recovery_Housing.pdf
- Best Practices for Recovery Housing, SAMHSA
<http://store.samhsa.gov/pep23-10-00-002>
- Healthy People 2030, U.S. Department of Health and Human Services, Office of Disease Prevention and Health Promotion
<https://health.gov/healthypeople/priority-areas/social-determinants-health>
- Homelessness Is a Housing Problem, Gregg Colburn & Clayton Page Aldern, University of California Press, 2022
- Housing First, A Review of the Evidence
<https://www.huduser.gov/portal/periodicals/em/spring-summer-23/highlight2.html>
- Recovery Housing Policy Brief
<http://files.hudexchangeinfo.com/recovery-housing-policy-brief>
- SAMHSA Announces National Survey on Drug Use and Health (NSDUH) Results Detailing Mental Illness and Substance Use Levels in 2021
<https://www.hhs.gov/about/news/2023/01/04/samhsa-announces-national-survey-drug-use-health-results-detailing-mental-illness-substance-use-levels-2021.html>
- Substance Use and Housing National Leadership Forum, 2014
<https://www.csh.org/resources/substance-use-and-housing-national-leadership-forum-convening-report/>

Session Resources

- Session resources coming soon!



Check back after the session for resources that were referenced in the presentation or session chat and patient case recommendations.