

The logo for ECHO IDAHO is a large, stylized letter 'E' composed of three overlapping chevron shapes. The top chevron is yellow and contains the word 'ECHO' in white. The middle chevron is grey and contains the word 'IDAHO' in black. The bottom chevron is yellow and contains the text 'K12 Substance Use Prevention & Treatment' in black.

ECHO IDAHO

**K12 Substance Use
Prevention & Treatment**

Promoting Collaboration with Juvenile Probation and Diversion

May 6, 2025

Stephanie Phillips, M.Ed., L.C.P.C.

District 4 & District 5 JJ SUDS Program Manager

None of the planners or presenters for this educational activity have relevant financial relationship(s) to disclose with ineligible companies whose primary business is producing, marketing, selling, re-selling, or distributing healthcare products used by or on patients.

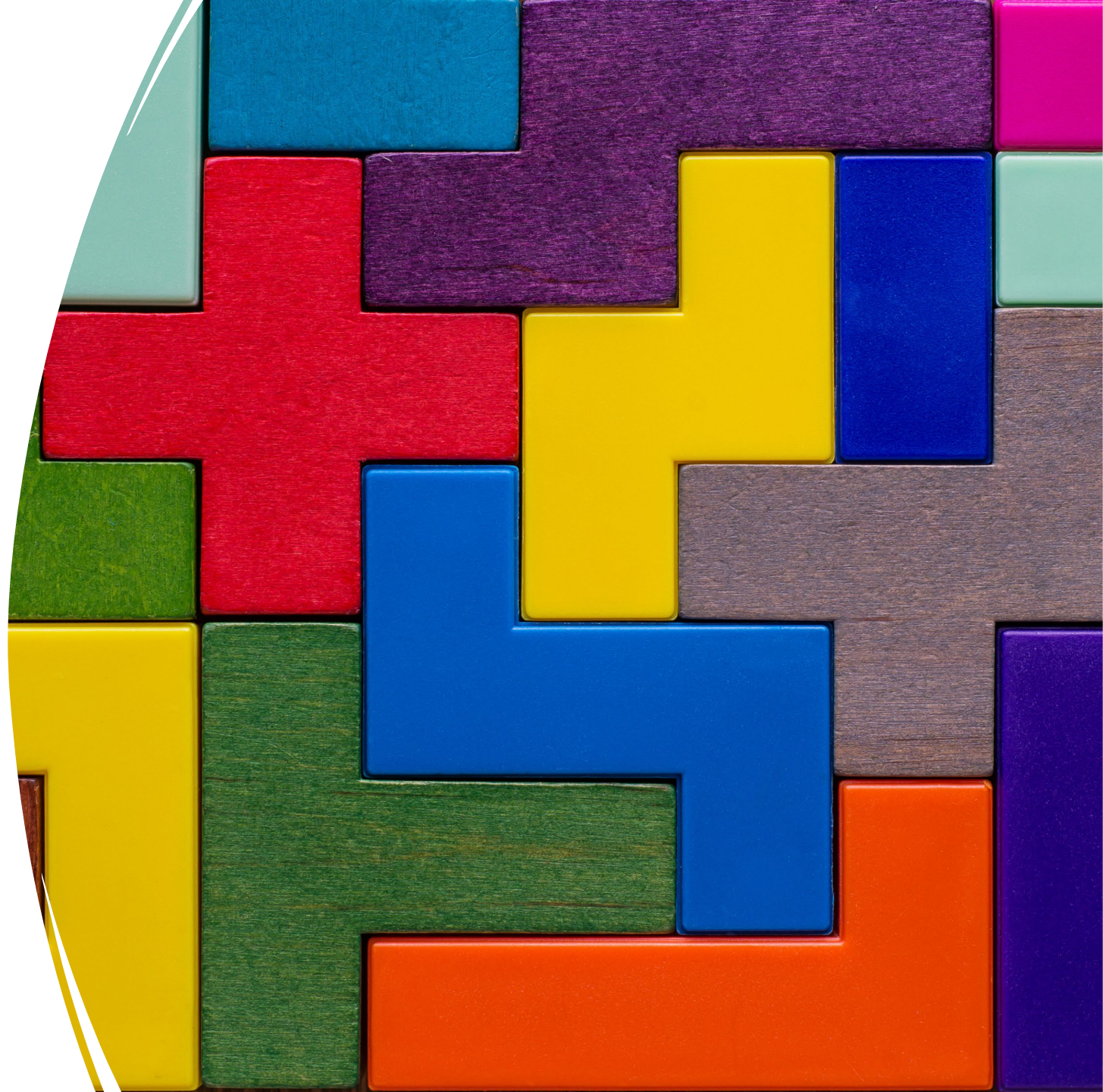


University of Idaho
School of Health and Medical Professions
College of Education, Health and
Human Sciences



Learning Objectives

- Define SUDS funding, where it comes from and who can access.
- Recognize the District you work in and who the contact for SUDS funding is in your county.
- Know who can make a referral for SUDS funding & for what services.



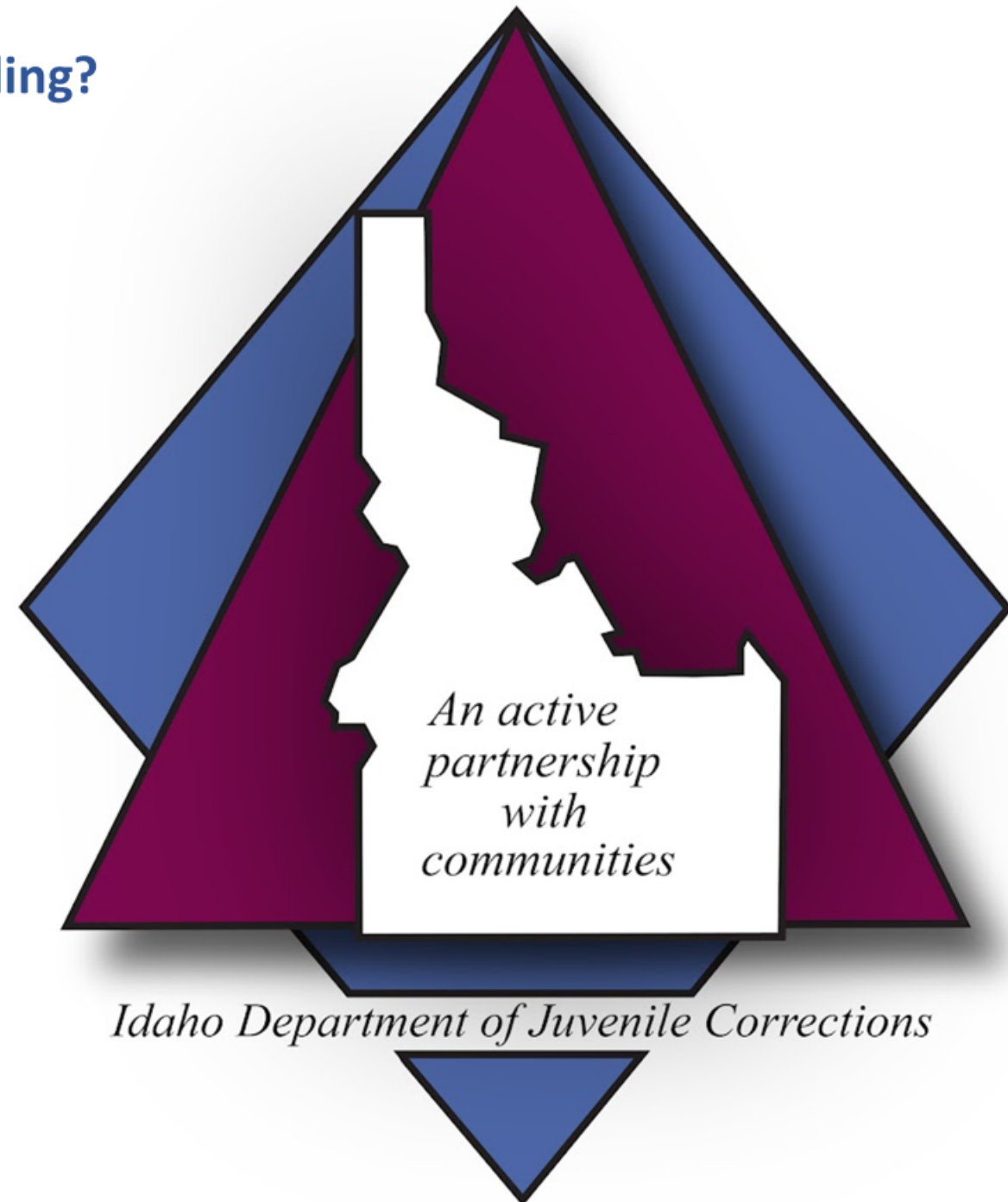
What is SUDS and where does it receive its funding?

In accordance with state legislation, the Idaho Department of Juvenile Corrections (IDJC) receives annual appropriations to provide community-based treatment services for justice-involved juveniles.

Within IDJC, the Community, Operations, and Program Services (COPS) Division manages the Juvenile Justice Substance Use Disorder (JJ SUDS) Program and the Community Based Alternative Services (CBAS) Program under the Behavioral Health Unit. The management of these programs includes policy development, statewide planning, resources allocation, reimbursement, and continuous quality improvement strategies.

Partnerships with Idaho's counties and tribes are at the center of the state's juvenile-justice system. By allowing these funds to be authorized for treatment locally, this model provides substance use disorder treatment, mental health treatment, commitment prevention, and behavioral addiction treatment services for clients involved in the juvenile justice system who do not require commitment to the department.

These strong and viable partnerships have been vital in implementing and maintaining these statewide programs.



IDJC has collaborated with Idaho counties and tribes, the Judiciary, and other stakeholders to build a responsive service delivery system of treatment for youth that are not committed to the Idaho Department of Juvenile Corrections, but who are on Juvenile Probation and Diversion. There are 7 Districts and 2 Tribal communities involved in the community-based JJ SUDS program. Each district or tribe is responsible for the delivery and oversight of funding for their justice-involved juveniles who have substance use disorder treatment needs in their districts or tribal communities.

[District 1](#)

Benewah County
Bonner County
Boundary County
Shoshone County
Kootenai County

[District 2](#)

Clearwater County
Lewis County
Idaho County
Latah County
Nez Perce County

[District 3](#)

Adams County
Canyon County
Gem County
Owyhee County
Payette County
Washington County

[District 7](#)

Bingham County
Bonneville County
Jefferson County
Madison County
Fremont County
Teton County
Lemhi County
Custer County
Butte County
Clark County

[District 4](#)

Ada County
Boise County
Elmore County
Valley County

[District 5](#)

Blaine County
Camas County
Cassia County
Jerome County
Minidoka County
Lincoln County
Gooding County
Twin Falls County

[District 6](#)

Bannock County
Bear Lake County
Caribou County
Oneida County
Franklin County
Power County

[Nez Perce Tribal Community](#)

[Shoshone-Bannock Tribal Community](#)



District SUDS Teams Purpose:

The purpose of the District SUDS teams are to **oversee the process of how the counties track and manage resources and appropriate levels of care for juveniles** receiving services by:

- Sustaining a district wide comprehensive SUD services plan that includes the following services: assessment, level of service: Level 0.5 D/A Education, Level 1 OP, Level 2 IOP, Level 2.5 PHP, Level 3.5 Residential, service authorizations, service delivery, payment, coordination, and continuous case management.
- Optimizing the use of these appropriated funds for services and supporting juveniles and their families
- Overseeing and ensuring standards of best practice, with Magellan Healthcare managing the provider network
- Collaborating, as needed or requested, with IDJC regarding treatment status, treatment outcomes, supervision status, and risk levels.
- The District SUDS teams act as the decision-making board in screening referrals and reviewing clients currently receiving services funded through SUDS.

- *Who participates?*
 - All counties in Idaho have an allotment of SUDS funding. Any juvenile on probation or diversion who scores at a risk-level for substance use can access SUDS funding for further assessment and treatment. The court can also order a SUDS assessment, for which SUDS funding can be used.
- *What does this look like?*
 - The process to access SUDS funding for juveniles is to go through the juvenile probation officer. County JPOs are the point of contact.
- *How are services approved & authorized?*
 - Services are approved via a District team and a District Program Manager and then authorized and paid electronically in the WITS computer system.
- *Who can make a referral?*
 - Referrals come from JPOs. A juvenile is eligible for SUDS funding if they are on juvenile probation or diversion.



Juvenile Justice SUDS covered Services

3 rd Millennium Classrooms Drug & Alcohol Online Education (include Nicotine 101, Other Drugs, Marijuana 101 JV, Under the influence JV)	Alcohol or Drug Assessments	Drug & Alcohol Testing
Level 1 Outpatient Treatment	Level 2.1 Intensive Outpatient Treatment	Level 2.5 Partial Hospitalization
Level 3.5 Residential Treatment	Transitional Housing (treatment + housing)	Safe & Sober Housing (housing only)
Case Management	Childcare for teen parents (for client to attend treatment only)	Life Skills (including parenting skills)
Recovery Coaching (over age 18 only)	Oral Interpreter	Staffing (emails, face-to-face meetings , phone calls)
Transportation	Travel for Professionals	

JJ SUDS APPROVED SERVICES

** Not all approved services are available in every county, in every District.

EXHAUSTED FUNDING: All efforts will be made to ensure juveniles are able to obtain needed services. If all funding has been utilized prior to the fiscal year end, there may be a need to a wait list for services. In the event of a wait list, priority for services will be given to pregnant females, IV users, and those juveniles who are deemed to be high risk and/or high priority by probation and the District SUDS team, due to their criminal history, age, risk score, and available clinical information.

The Importance of Collaboration

- Our best work is often done in collaboration.
- Team approach = dream approach.
- Get the Release of Information and collaborate.
- School personnel can offer a unique perspective of a juvenile and this is important!



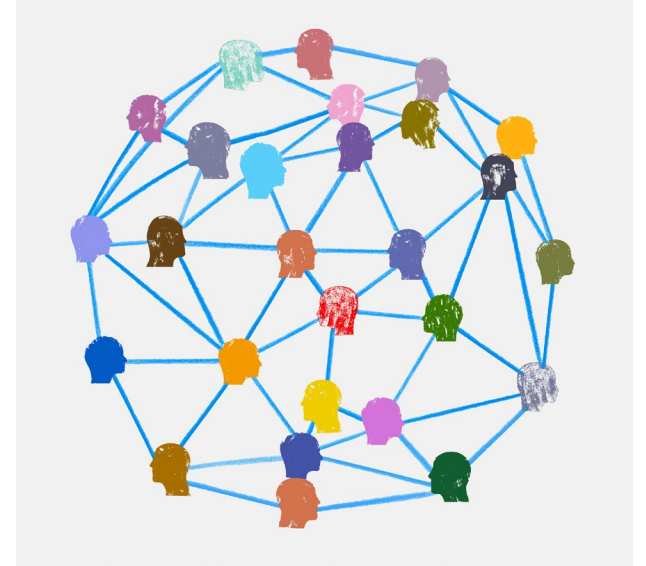


Juvenile
Justice



+

Schools



= SUPPORT



Key Points

What to take-away from today's training:

- JJ SUDS funding is available for all juveniles who are on juvenile probation or diversion and who receive a SUDS assessment with ASAM.
- Accessing JJ SUDS funding is simple! 😊
- JPOs are the lead on accessing this funding.
- Juveniles must utilize an in-network IDJC-approved provider to access JJ SUDS funding to pay for treatment needs. In-network status means in the Idaho Medicaid Magellan network.
- JJ SUDS funding was created to remove barriers for justice-involved youth to access treatment services.

References

- <https://www.idjc.idaho.gov/community-operations/community-operations-and-program-services-cops-division/>
- <http://www.idjc.idaho.gov/community-operations/behavioral-health/>
- Community Plans District 4 & District 5 (uploaded on IDJC's website)
- Kleinman, P., Nakashian, M., Tapper, D. (1997). An Interagency Collaboration Strategy for Linking Schools with Social and Criminal Justice Services. *Social Work in Education*, 19 (3), 176-188.
<https://academic.oup.com/cs/article-abstract/19/3/176/362630>



Thank You



Thank you for all you do to serve our youth in Idaho!



University of Idaho
School of Health and Medical Professions
College of Education, Health and
Human Sciences

